

Name:
Grade: 7
Physics worksheet



Question one:

- What is the difference between electric conductor and electric insulator?
- How does the electric current flow?
- Write the S.I unit of current, and give its symbol.
- Name a device used to measure electric current.
- Name a device used to measure the voltage.

Question two: An electric circuit is composed of a battery(9V), an open switch, and a lamp(12V) connected to each other via electrical wires.

- Schematize the given circuit.
- Is this circuit open or closed? Justify
- Does the lamp glow? Justify

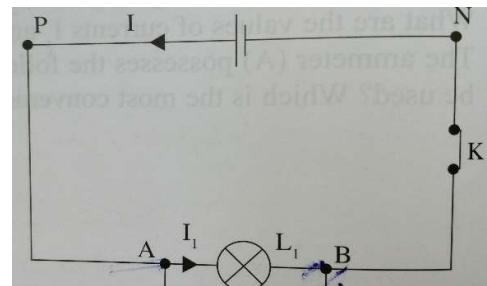


4) The switch is now closed.

- Draw a new circuit.
- Does the lamp glow normally, very dimly or brightly? Justify

Question three: Observe the adjacent circuit:

The voltage across the battery is 24V and the voltage across the lamp is also 24V.



- Redraw the circuit and connect a voltmeter to measure the voltage of a lamp.
- Connect an ammeter to the same circuit.
- Determine with justification: U_{PA} , U_{AB} , U_{BN} and U_{PN} .